

VISTA MOUNT HAGEN SHOW TOUR – AUGUST 2017

13-day/12-night fully escorted tour
10th to 22rd August 2017

The Vista is an escorted 13-day/12-night program that provides a stunning view of Papua New Guinea. The journey begins with the stunning vista of Ambua Lodge overlooking the Tari Valley, home of the Huli. Then fly to a special cruise on the Sepik River aboard the Sepik Spirit, the perfect way to discover a rarely visited corner of the globe. After the cruise, relax at Karawari Lodge, which is located in the Sepik Region. From there, fly into the Western Highlands to feature the highlights of a flamboyant and colourful people the spectacular Mt Hagen Cultural show, providing an incredible vista of cultures from all over Papua New Guinea. In a land of nearly 800 languages, there is no better place to see so many gathered in one place.

SUMMARY - 10 to 22 August 2017

2 nights	- Airways Hotel, Port Moresby
3 nights	- Ambua Lodge, Southern Highlands
1 night	- Karawari Lodge, Sepik Region
3 nights	- Sepik Spirit, Sepik Region
3 nights	- Highlander Hotel, Mount Hagen

BRIEF ITINERARY

Thursday 10 August 2017

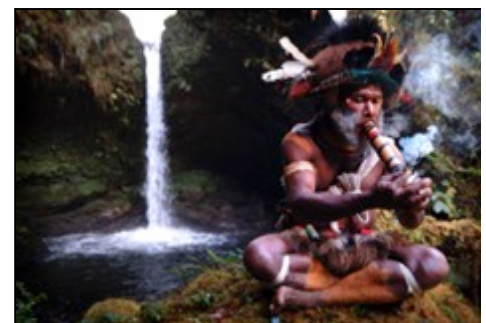
Upon your arrival in Port Moresby, you will be met by Trans Niugini Tours staff. You will then be transferred to your Hotel.

Overnight: AIRWAYS HOTEL (D)

Friday 11 August 2017

Transfer from Airways Hotel to Jackson's airport for your domestic Air Niugini flight to Tari on PX864. Arrive Tari airport, meet/greet and transfer to Ambua Lodge. Ambua Lodge is high on the slopes of the Tari Valley - home of the Huli, a colourful and proud group of people, still largely living the same way that their ancestors did. The afternoon is spent exploring the area surrounding Ambua - high mountain forests with roaring waterfalls beckon the intrepid traveller.

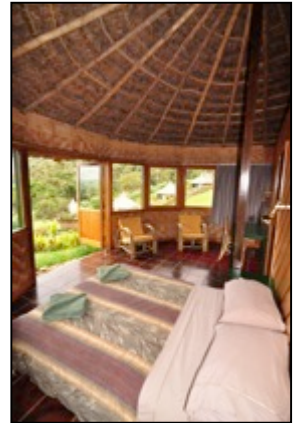
Overnight: AMBUA LODGE (BLD)



Saturday 12 & Sunday 13 August 2017

Two full days of cultural and ecological touring. The Tari area is home to an incredible 13 species of birds of paradise, as well as numerous orchid species. Learn how the Huli live and how they interact with and use their environment.

Overnights: AMBUA LODGE (BLD)



Monday 14 August 2017

Transfer from Ambua Lodge to airstrip for charter flight to Karawari. Meet/Greet and transfer by river boat to Karawari Lodge, poised on the ridge overlooking the river and jungle-clad Sepik Basin, is a world entirely unique. The real fascinations here are the people and how they live with the land and how it moulds their lives. They still live as they have for generations with rituals, sing-sings, story telling, food gathering and preparation. With Karawari's carefully planned cultural programme, daily visits in river boats are made to selected villages allowing one the opportunity to be able to observe village life and customs, participate in typical daily activities and see re-enactments of traditional ceremonies. We will visit remote jungle waterways where we will find huge lichen and vine - festooned trees, masses of brilliant flame flowers, and a profusion of orchids. The soft dawn glimmers on these waterways and the vast plain erupts with a myriad of birds - the raucous jungle music. Dug-out canoes glide close by the river banks - stilt villages suddenly spring in sight along the flowing waters. Here we will see man and the environment as it has been for thousands of years.

Half day excursion along the jungle-fringed waterways of the Karawari River where boatmen, standing upright, paddle their slender dugout canoes with sculpted silhouettes of crocodile masks. Village life including carved totems, drums, woodcarvings and different expressions of art are also experienced. See bountiful bird life along the rivers and nearby lakes. Excursions will enhance your understanding of traditional village culture in the Sepik region. **Overnight: KARAWARI LODGE (BLD)**



Tuesday 15 August

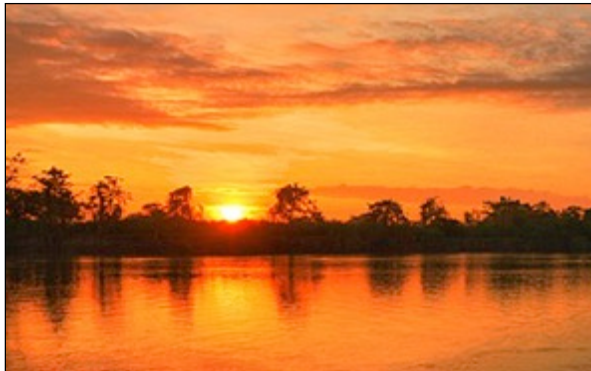
After breakfast transfer from Karawari Lodge to the comfort of the Sepik Spirit. Enjoy lunch on board the Sepik Spirit. Begin your voyage of discovery to local villages. Inspired by the local architecture of the "haus tambaran" or spirit house, the Sepik Spirit has a truly unique design.

Overnight: SEPIK SPIRIT (BLD)

Wednesday 16/ Thursday 17 August 2017

Enjoy two full days tour with picnic lunched to the remote Black Water Lakes. While touring you will visit villages where the people are prolific carvers. Here you can purchase many interesting items such as masks elaborately carved hooks, ancestral figures, hand drums, baskets, bilums and gourds. On return from tour the Sepik Spirit will cruise back to Karawari for your early morning departure the following day.

Overnights: SEPIK SPIRIT (BLD)



Friday 18 August 2017

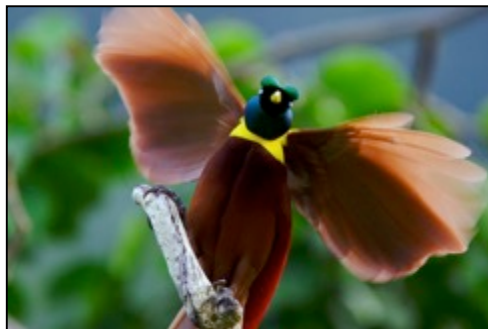
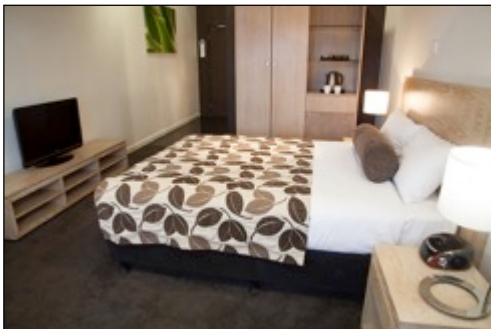
To-day you leave the Sepik Spirit and transfer by river boat to Karawari Airstrip for charter flight to Mount Hagen. During the flight, mountains rise up to startling heights out of the flat lands of the Sepik Basin. Mount Hagen Town is in the upper Waghi Valley - a valley with some of the oldest evidence of agriculture in the world. Upon arrival at Mt Hagen/Kagamuga airport, you will be met and transferred to Highlander Hotel. In preparation for the Mount Hagen Cultural Show there will be a pre-show program in the afternoon.

Overnight: HIGHLANDER HOTEL – PREMIER ROOM (BLD)

Saturday 19 & Sunday 20 August 2017

Two full days spent at the Mount Hagen Show - world famous for its colour, culture and vibrancy. It is a truly spectacular event. The diversity of the coastal, lowland and highlands sing sing groups at the Hagen show reflects the incredible diversity of the Papua New Guinea's landscape - an unforgettable experience.

Overnights: HIGHLANDER HOTEL – PREMIER ROOM (BLD)



Monday 21 August 2017

Transfer from the Highlander Hotel to Kagamuga airport for your flight to Port Moresby on PX181. Arrive Jackson's airport, meet and transfer to your hotel. Proceed with lunch then followed by an afternoon Port Moresby and surrounds tour including visits to the National Museum, Botanical Gardens, PNG Arts Shop and National Parliament House (outside view only).

Overnight: AIRWAYS HOTEL – BACCHUS WING (BLD)

Tuesday 22 August 2017

This morning, you will be transferred from Airways Hotel to Jackson's airport to your international departing flight. **(B)**

INFORMATION

LAND COST: TWIN SHARE ROOM BASIS

SINGLE SUPPLEMENT ROOM THROUGHOUT EXCEPT TWIN SHARE ON SEPIK SPIRIT & HIGHLANDER HOTEL
US\$1099.00 per person

LAND COST INCLUDES

Accommodation, airport transfers and tours on a seat in a bus basis, meals from dinner on arrival Thursday 10 August to breakfast on departure Tuesday 22 August, services of a professional tour escort throughout, local guides and show gate fees. Cost also includes all gratuities to hotel, restaurant staff, local drivers, guides and porters.

LAND COST DOES NOT INCLUDE

Domestic and international flights, visa fees and services of a personal nature such as beverage, laundry charges and phone/fax bills.

ADDITIONAL AIR CHARTER COST

US\$1,400.00 per person

Two (2) flights will be required

Monday 14 August 2017 - Ambua to Karawari

Friday 18 August 2017 - Karawari to Mt. Hagen

DOMESTIC AIR NIUGINI FLIGHT COST per person \$400 USD at current rates

SPECIAL NOTE REGARDING CHARTERS: Maximum baggage allowance is **10kg** per person and a maximum of **5kg** carry on baggage per person. Large, hard sided suitcases are not permitted on charter aircraft.

TRAVEL INSURANCE IS MANDATORY

TOTAL LAND COSTS AND FLIGHTS

Based on 2 sharing: **\$10178**

Based on single occupancy: **\$11277**

BOOKING AND PAYMENT PROCEDURES

To secure space, a \$500 non-refundable deposit per person is required to confirm the booking.

Full payment is due on 6 June, 2017. We will confirm booking only on receipt of payment.

Payments are to be sent by bank transfer (A.K.A. wire transfer or EFT).

POLICY ON EXCHANGE OF SERVICES & SERVICES NOT TAKEN

Please note that Best of PNG is unable to refund any services which appear in the main itinerary, but are not taken. Please also note that Best of PNG is unable to exchange services which are not taken in the main itinerary for other services. Services must be taken on the day that they appear in the main itinerary, and cannot be transferred to a different day.

CANCELLATION POLICY

Cancellations received between 6th June 2016 and commencement of the tour will attract a 50% fee of the total land and air charter costs. No refund is available after scheduled arrival

in Papua New Guinea or in respect of any tour, accommodation, meals or any other service not utilized during the tour. Any additional costs incurred because of changes made during the itinerary by clients, will be to the client's account.

CLIENT INFORMATION

Upon receipt of deposits, you will be sent a confirmation packet and Client Information Booklet. We cannot stress enough the importance of reading this information prior to your arrival in Papua New Guinea. The Client Information Booklet has been specifically designed to give you vital information about strict luggage weight limits on the small aircraft used throughout the tours, possible delays in aircraft movements, standards of accommodation, etc. - Information in advance may help you to adjust to situations better as they occur.

INSURANCE

Travel insurance is mandatory. We advise that you take out travel insurance to cover you in the event of inability to commence travel due to health reasons and medical insurance whilst abroad. You could look at World Nomads who have excellent policies. <http://www.indigosafaris.com/pages/travel-insurance.php>

VISAS

Visas on arrival are available at Port Moresby airport for passport holders from the EU, North America and some other nationalities. Contact us for the full list The Visa fee of 100 PGK has been waived as of October 2013. Other nationalities must apply for their visa in advance.

MALARIA

Malaria is transmitted by a night biting mosquito. Insect avoidance measures should be followed throughout the trip. Medication for the prevention of malaria is crucial for the Papua New Guinea. Which drug is recommended depends on individual circumstances & needs to be discussed with an experienced travel physician. It is also vital to continue with the medication for the recommended interval on return to Australia. Upon return, any flu like illnesses should be investigated by a travel health specialist.

<http://www.fitfortravel.nhs.uk/destinations/australasia--pacific/papua-new-guinea/papua-new-guinea-malaria-map.aspx>

Major plasmodium species: P. falciparum (89%), P. vivax (11%)

Major anopheles species: An. punctulatus, farauti, koliensis

COMMUNICATIONS:

Digicel has decent coverage and a shop at the airport in the arrivals area. You can get a local SIM card and buy airtime. Airtime can be converted to data packages quite cheaply for smartphones and iphones.

Best regards,

A handwritten signature in black ink, appearing to be 'CB', with several horizontal strokes extending to the right.

Christopher Bartlett